

# CERTIFICATE OF LOCATION OF GOVERNMENT CORNER

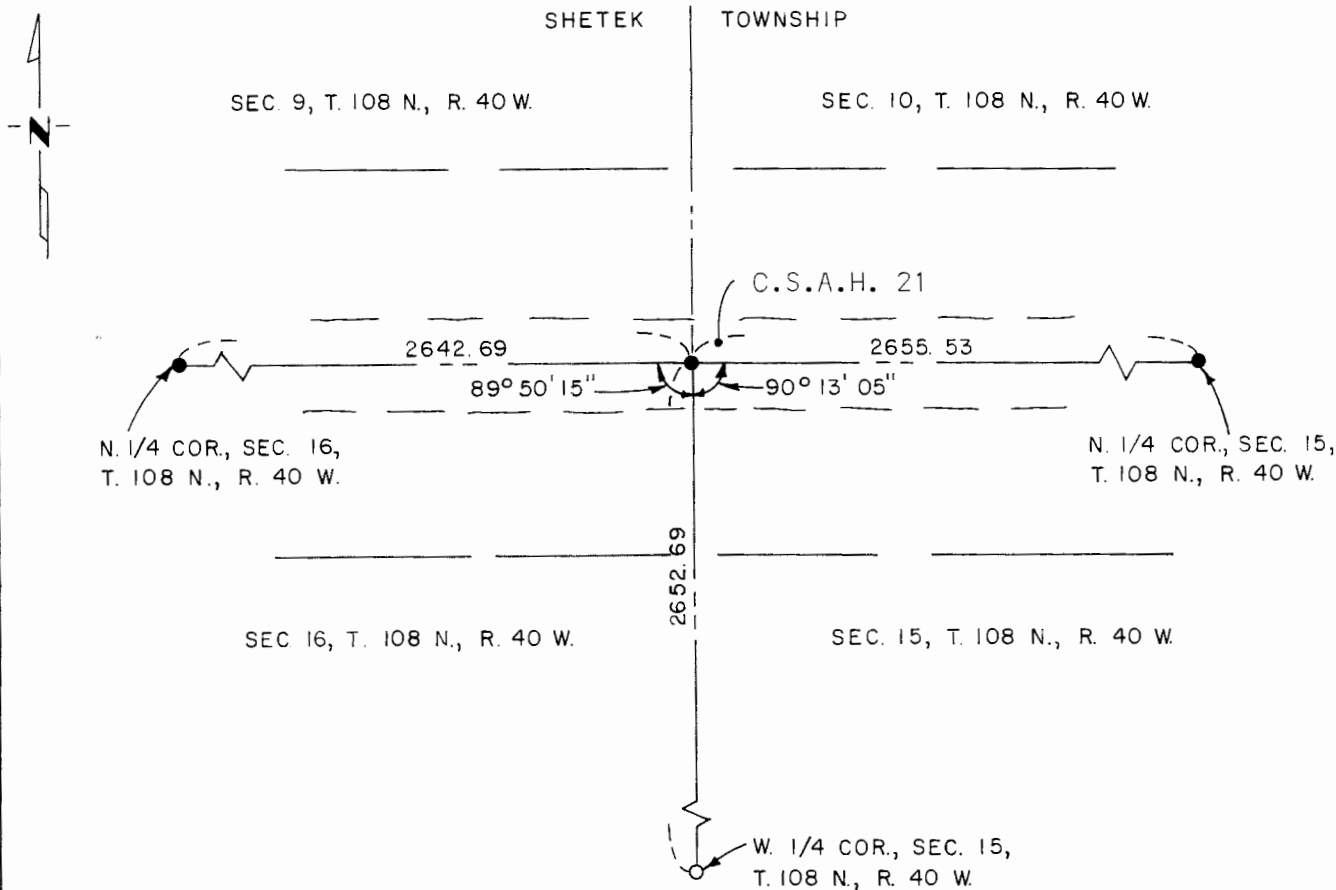
Northwest Corner of Section 15, Township 108 N., Range 40 W., 5th P.M.

STATE OF MINNESOTA, County of Murray

At the corner location shown on the sketch:

- On Sept. 5, 1980 found a 1/2" iron bar per Co. records.  
DATE
- left monument as found,  lowered monument,  removed monument (explain)
- On \_\_\_\_\_ placed a \_\_\_\_\_  
DATE

### SKETCH OF REFERENCE TIES



I hereby certify that this document and the data contained herein was prepared by me or under my direct supervision.

\_\_\_\_\_  
SIGNATURE                      DATE

Registration No. 12967

Land Surveyor,  Professional Engineer

County Surveyor,  County Engineer

OFFICE OF THE COUNTY RECORDER

County of Murray

I hereby certify that this document was filed in the Co. Recorders office at 10 A. .M. on the 18th day of February A.D., 1982

County Recorder Willard W. Ohme

By \_\_\_\_\_, Deputy

DOCUMENT NO. \_\_\_\_\_